

## MOUSE ANTI-HUMAN HLA-DR (CLONE L243) FOR VIOLET LASER (CFBlue™)

Anti HLA-DR recognizes a human class II major histocompatibility complex (MHC) antigen. The antigen is a transmembrane glycoprotein composed of  $\alpha$ - and  $\beta$ -subunits that have molecular weights of 36 and 27 kilodaltons (kDa), respectively. HLA-DR is constitutively expressed on antigen presenting cells (APC) and some immature cell subsets of the hematopoietic lineage.

### Comparison between Immunostep HLA-DR product and reagents from other companies:

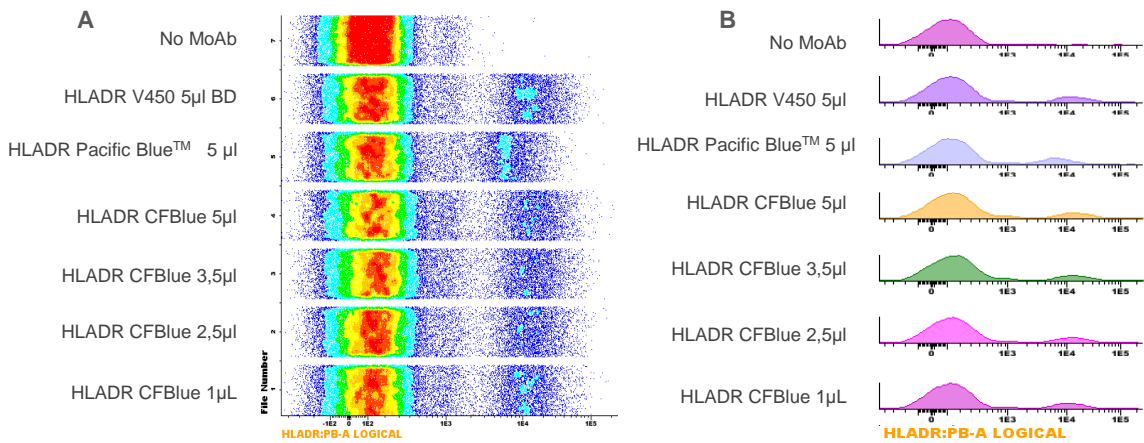


Figure 1: IMMUNOSTEP HLA-DR CF™Blue A) total density and B) histogram of human peripheral blood lymphocytes (gate) (HLADRCFB2-100T Clone L243) at different concentrations vs V450 HLADR (Clone L243) and Pacific Blue HLADR (Clone L243).

	HLA-DR V450 5 µl	HLA-DR Pacific Blue™ 5 µl	IMMUNOSTEP HLA-DR CFB		
			5 µl	3,5 µl	2,5 µl
MFI	16751	8329	18590	17829	16874
SI	38,95	24,60	39,61	42,13	43,52
MFI <sup>+</sup> /MFI <sup>-</sup>	89,10	51,30	82,01	82,64	118,64

Table 1: IMMUNOSTEP HLA-DR CF™Blue median fluorescence intensity (MFI) and stain index (SI) vs V450 HLADR (Clone L243) and Pacific Blue HLADR (Clone L243).

### Advantages:

- **Better Stain Index (SI)** and brighter than comparable reagents conjugated to Pacific Blue™ (30%) or BD Horizon™ V450 (10%)
- Excellent Results in **dilutional** assays .
- Optimized to use in combination with our **exclusive products** at AML panels:
  - **CD300e APC** (IREM2 alternative name (Ref.: IREM2A-100T) ✓)
  - **Carboxipeptidase APC** (Ref.: CPAA-100T) ✓



**IMMUNOSTEP YOUR DIAGNOSTIC FLOW CYTOMETRY PARTNER**